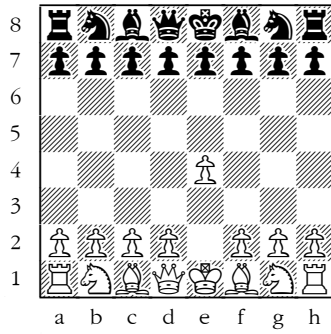


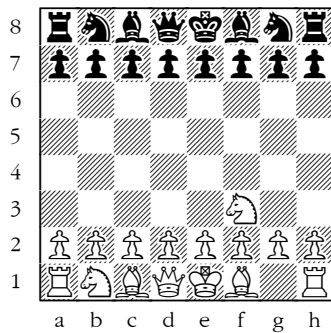
Name: _____ Date: _____

ACN Test



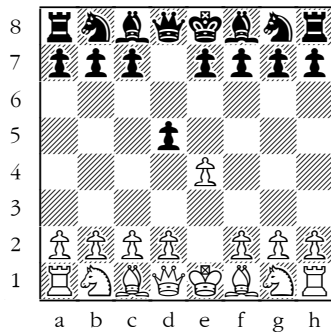
Record White's first move

1. _____



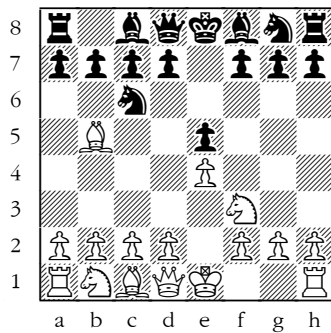
Record White's first move.

1. _____



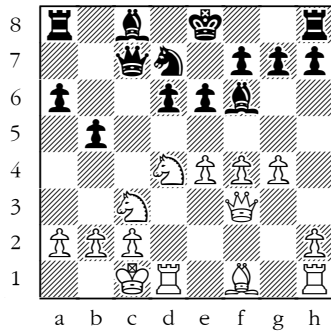
Assume that White will play pawn takes pawn.
Record White's move.

2. _____



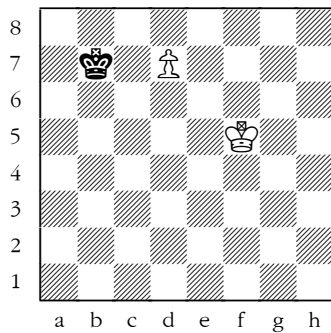
Assume that Black will move the knight from g8 to e7.
Record Black's move.

3. ... _____



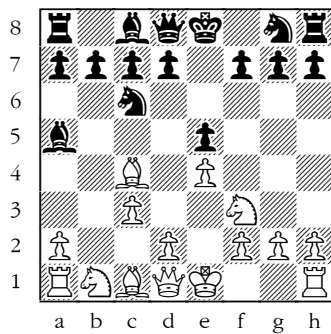
Assume that White will capture the b5 pawn with the knight on c3. Record White's next move.

12. _____



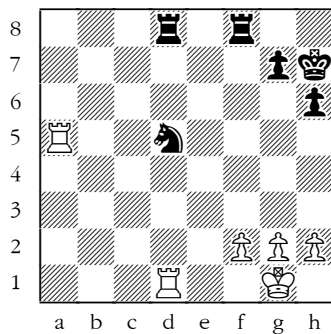
Assume that White will push the White pawn one square forward and promote it to a queen. Record White's next move.

65. _____



Assume that White will castle kingside. Record White's next move.

6. _____



Assume that White captures the knight with the Rook at a5. Record White's next move.

58. _____