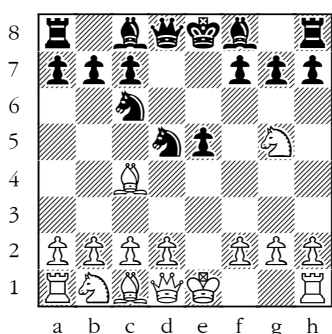


# The Fried Liver and Lolli Attacks

Compiled by Steven Craig Miller

1. e4 e5
2. ♟f3 ♟c6
3. ♞c4 ♟f6
4. ♟g5 d5
5. exd5 ♟xd5



## A: Fried Liver Attack

6. ♟xf7 ♞xf7
7. ♞f3+ ♞e6

The move 7. ... ♞g8 leads to mate, for example: 8. ♞xd5 (or 8. ♞xd5) ♞xd5 9. ♞xd5 ♞e6 10. ♞xc6#

8. ♟c3 ♟b4

Worse is 8. ... ♟e7, for example: 9. d4 c6 10. ♞g5 h6 11. ♞xd7 ♞xc7 12. 0-0-0 ♞f8 13. ♞e4 etc.

9. ♞e4 ...

9. a3 ♟c2 10. ♞d1 ♟d4 11. ♞d5 ♞d6 13. ♞g3 ♞f5 13. d3 c6 14. ♞e4 ♞f6 15. ♞e3 ♞d7 16. ♞d4 exd4 17. ♞f5 ♞f5 18. ♟e4 ±, Giordanengo—Gehrke, Zürich 1991.

9. ... c6
10. a3 ♟a6

11. d4 ♟c7
12. ♞f4 ...

12. f4 (12. ♞xe5+? ♞f7) ♞f7 13. fxd5 ♞e6 14. 0-0 ♞e8 ∞.

12. ... ♞f7
13. ♞xe5 ∞

## B: Lolli Attack

6. d4 ♞b4+

(a) 6. ... exd4 7. 0-0 (For 7. Nxf7?! Qe7+ 8. Qe2 Qxe2 9. Kxe2 etc., see *Chess Life*, July 2002:10-11) 7. ... ♞e7 (7. ... ♞e6 8. ♞e1 ♞d7 9. ♟xf7 ♞xf7 10. ♞f3 ♞g8 11. ♞xe6 +-) 8. ♟xf7 ♞xf7 9. ♞h5 g6 10. ♞xd5 ♞e8 11. ♞f3 ±, Rauf Mamedov—Sachsenhofer, Tallinn 1997.

(b) 6. ... ♞e7 7. ♟xf7 ♞xf7 8. ♞f3 ♞e6 9. ♟c3 ♟cb4 10. ♞e4 c6 11. a3 ♟a6 12. ♞e5 (12. ♞f4) ♞f7 13. ♟d5 cxd5 14. ♞d5 ♞f8 15. 0-0 ±

7. c3 ♞e7
8. ♟xf7 ♞xf7
9. ♞f3+ ♞e6
10. ♞e4 ♞f8

(a) 10. ... b5 11. ♞xb5 ♞b7 12. f4 g6, Kalvach—Drtina, corr. 1986. ECO-4 [2000] assesses this position as “±”, but MCO-14 [1999] assesses this same position as “about even.”

(b) 10. ... g5 11. 0-0 ±, Grétarsson—Bj. Thorfinnsson, Ísland 1996.

11. 0-0 ♖ce7
12. f4 c6
13. fxe5 ♜d7
14. ♗e2 ♜e8
15. c4 ♖c7
16. ♖c3 ♗e6
17. ♗g5 ♜d7
18. ♜ad1 ± ...

From: Leonard Barden—W. Adams,  
Hastings 1951/52, the rest of the game  
was:

18. ... ♜c8
19. ♗xe7 ♜xe7
20. d5 ♜c5+
21. ♜h1 cxd5
22. cxd5 ♗d7
23. e6 ♗b5
24. ♜f4 ♜d8
25. ♗xb5 ♖xb5
26. ♖xb5 ♜xb5
27. d6 1-0