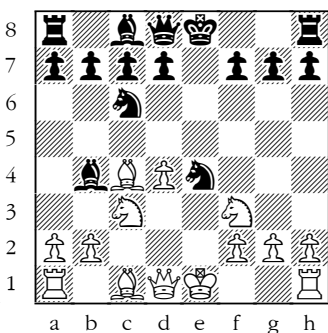


Giucoco Piano: Möller Attack

By Steven Craig Miller

1. e4 e5
2. ♖f3 ♗c6
3. ♘c4 ♘c5
4. c3 ♗f6
5. d4 exd4
6. cxd4 ♘b4
7. ♗c3 ♗xe4



White has sacrificed a pawn for an attack.

7. ... d5 8. exd5 ♗xd5 9. 0-0 ♗e6 10. ♘g5 ♗e7 11. ♘xd5 ♘xd5 12. ♗xd5 ♖xd5 13. ♗xe7 ♗xc7 14. ♖e1 f6 15. ♗e2 ♗d7 (Steinitz—Bardeleben, Hastings 1895) 16. ♗e4!± Keres [ECO] (16. ♖ad1 ± Fritz7).

8. 0-0

And now we will look at: (A) 8. ... 0-0?!
(B) 8. ... ♗xc3, and (C) 8. ... ♘xc3.

A

8. ... 0-0?!
9. d5 ♘xc3
10. bxc3 ♗e7
11. ♖e1 ♗f6
12. d6±

Spielmann—Cohn, Karlsbad 1907.

B

8. ... ♗xc3
9. bxc3 d5

(a) 9. ... ♘xc3? 10. ♘a3! d5 11. ♘b5 ♘a1 12. ♖e1 ♗e6 13. ♗a4 ♖b8 14. ♗e5 +- Corte—Bolbochan, Mar del Plata 1946.

(b) 9. ... ♘e7 10. d5 ♗a5 11. d6 cxd6 12. ♘xf7 ♗xf7 13. ♗d5 ♗f8 14. ♗g5 ♗e8 15. ♗a5 ±, Schlechter—Walter, Wien 1896.

10. cxb4 dxc4
11. ♖e1 ♗e7
12. ♘g5 f6
13. ♗e2 ♘g4

13. ... fxg5 14. ♗c4 ± Keres [ECO].

14. ♘f4 ♗f7
15. ♗c4 ♗d5
16. ♗d2! ♘e6
17. ♘g3 ♖e8
18. ♗e4±

Sakharov [ECO].

C

8. ... ♘xc3
9. d5 ♘f6

9. ... ♗e5 10. bxc3 ♗xc4 11. ♗d4 0-0 12. ♗e4 ♗d6 13. ♗d3 b6 14. ♘a3 ♗f6 15. ♗d4 ♗xd4 16. ♗xd4 ♘b7 17. ♘xd6 cxd6 18. ♗f5 g6 19. ♗xd6 ♘xd5 20. ♖fe1 ♘e6 21. f4±, Fritz6—Anand, Frankfurt (m/3) 1999.

10. ♖e1 ♘e7

10. ... 0-0 11. ♖xe4 ♘e7 (11. ... ♘a5? 12. ♕d3 d6 13. g4 +-, Thomas—Markwell, corr. 1966 —1/161) 12. d6 cxd6 (Euwe—Van Mindeno, Nederland 1926/27) 13. ♕g5 ♘g6 14. ♖d5 ±, Unzicker [ECO].

**11. ♖xe4 d6
12. ♕g5 ♕xg5**

(a) 12. ... ♕f5 13. ♕b5 ♖f8 14. ♖f4 ±, Levig—Tommi, Libverda 1934.

(b) 12. ... 0-0 13. ♕f6 gxf6 14. ♖d2 ♘g6 15. ♖ae1 ±, Spielmann—Duras, Karlsbad 1907.

13. ♘xg5 h6

Drawish (but complicated) is: 13. ... 0-0 14. ♘h7 ♖h7 (14. ... ♕f5 15. ♖xe7 ♖xe7 16. ♘xf8 ♖xf8 =) 15. ♖h5 ♖g8 16. ♖h4 f6 (16. ... f5 17. ♖h7 ♖f7 18. ♖h6 ♖g8 19. ♖e1 ♖f8 20. ♕b5 ♖h8 21. ♖xh8 gxf6 22. ♖h7 ♖f6 23. ♖xe7 ♖e7 [23. ... c6!?] 24. ♖xh6 =) 17. ♕d3 f5 18. ♕e2 ♖e8 (18. ... ♘g6 19. ♖h7 ♖f7 20. ♖h6 ♘f4 21. ♕h5 ♘h5 22. ♖g6 =) 19. ♖e1 ♖f8 20. ♕b5 ♕d7 21. ♖e6 ♕b5 22. ♖f6 = A. Pérez [ECO].

**14. ♖e2 hxg5
15. ♖e1 ♕e6
16. ♖e3 ♖f8**

16. ... g4 17. h3 c6 18. dxe6 f5 19. hxg4 d5 20. ♕d3 ♖d6 21. ♖f3 ♖h2 22. ♖f1 f4 23. ♖e5 0-0-0 ∞, A. Pérez—J. Olivera, Cuba 1998 —73/363.

17. dxe6 f6

(a) 18. ♖h3 ♖h3 19. gxh3 g6 20. ♖f3 ♖g7 21. ♖b7 ♖e8 22. ♖f3 ♖b8 ∞, Vidéki—Pál Pétran, Ajka 1991 —54/(310).

(b) 18. ♕d3 ♖e8 (18. ... c6 19. ♕g6! ♕f7 ♖) 19. ♖h3 ♖h3 20. gxh3 g6 21. ♖f3 ♖g7 22. ♖b7 ♖b8 23. ♖e4 d5 24. ♖a4 c6 (½-½, A. Pérez—Y. Pérez, Cuba 1996) 25. ♖a3 ♖c7 26. ♖c5 a5 ∞ (26. ... ♖h8? 27. ♖e3 g4 28. ♕f1 ♕ ♖a3 ±).

Assessment

The Möller Attack is very dangerous, and if Black doesn't know what to do, it is very easy for Black to stumble into a bad variation. On the other hand, the Möller Attack is very speculative for White and especially in line 'C' it is unclear whether White has enough even for equality — it is possible that line 'C' is in reality better for Black. Nonetheless, the Möller Attack is very sharp and aggressive play, and a good opening to study.