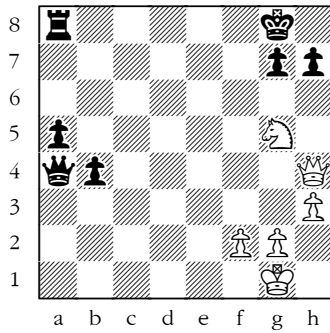


Name: _____ Date: _____

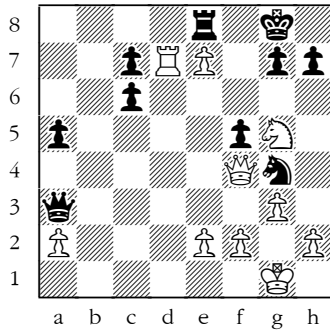
Smothered Mate (With Knight & Queen Sacrifice)

Compiled by Steven Craig Miller

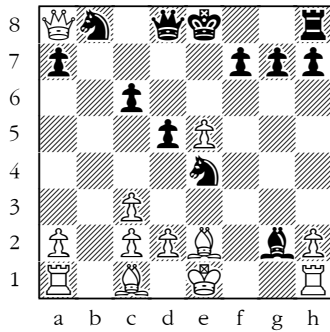


This diagram illustrates the basic smothered mate with knight and queen sacrifice. 1. ♚c4+ ♜h8 (if 1. ... ♜f8, then 2. ♚f7#) 2. ♜f7+ ♜g8 3. ♜h6+ (double check which prepares for the queen sacrifice by having the knight control the g8 square) ♜h8 4. ♚g8+ (the queen sacrifice) ♜xg8 5. ♜f7#

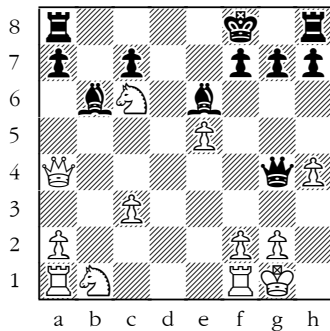
Go over this example until you completely understand the steps needed to achieve this type of smothered mate. Then solve the following problems.



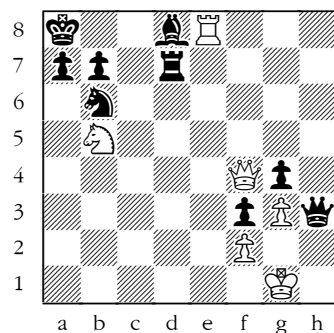
Timman—Short, Tilburg 1990
White to move & win



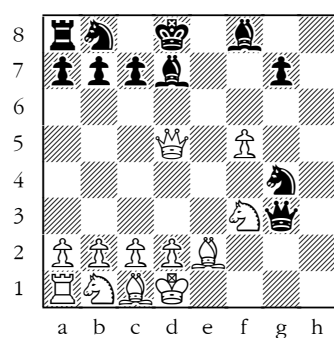
Samsonov—Nezhmetdinov, Kazan 1929
Black to move & win



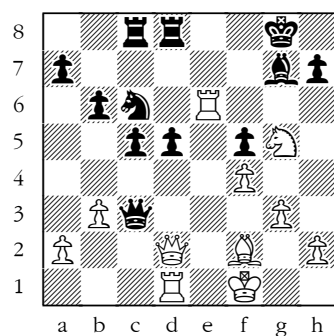
Morphy—Bryan, New York 1859
White to move & win



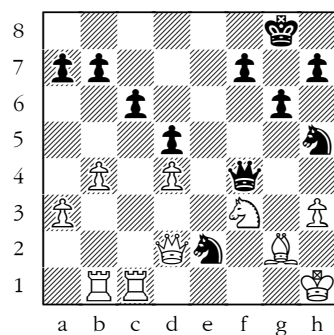
Stamma 1790
White to move & win



Greco 1881
Black to move & win



Zatulovskaya—Skegina, Sochi 1982
White to move & win



Siff—Kashdan, USA 1948
Black to move & win